



ST RESOURCES THAILAND CO., LTD

No. 9 The place Building, 2nd fl., Unit 2201, Chan Road 18/2,
Thung Wat Don, Sathorn, Bangkok 10120

Website: <https://stresourcesthailand.com>

E- Mail: sales@stresourcesthailand.com

Sales support department (Petro equipment)

Contact: Mr. Povitha



BREATHER VALVE

MODEL: KBV



THE DESCRIPTION OF PRODUCT

The model KBV (the technology from Korea) - Breather valve with one pressure disc and another vacuum disc, also called the pressure vacuum relief valve without flame arrestor that is installed on top of tanks, which provides protection against positive or vacuum overpressure and prevents air intake, evaporative losses of product and helps contain odorous and potentially explosive vapors.

Type: End of line, Weight Loaded Pressure Vacuum Relief Valve is designed to protect the tank from excessive internal pressure during operation.

THE WORKING PRINCIPLE

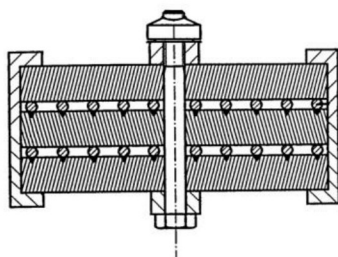
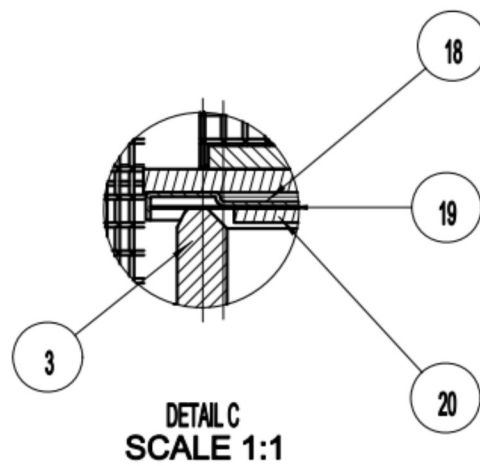
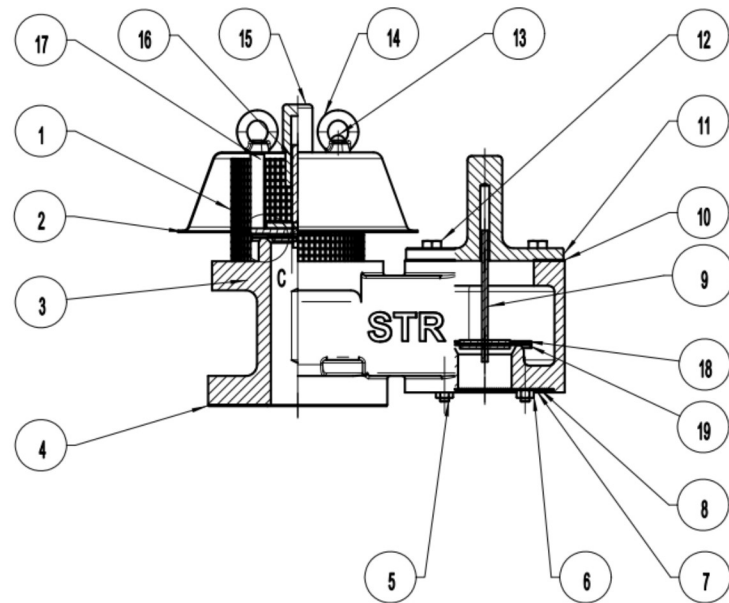
When internal pressure in the tank goes up, due to product filling or vapor development, the set pressure will be increased, accordingly, the pressure disc will be opened and discharge the gas to atmosphere. The set pressure can be arranged according to storage tank requirements and the breather valve will be reset when internal pressure returns to below set pressure. The vacuum disc is similarly maintained in the closed position.

When internal pressure in the tank reduces, due to emptying vacuum conditions occurs, the balance between the tank pressure and the external atmospheric pressure change. Accordingly, the set pressure of the unit is reached, the vacuum disc opens to vacuum air content and rebalance the internal pressure, and so the breather valve activated as close as to set pressures.

KEY CONSTRUCTION AND MODELS

Standard size	: Inch: 2" - 12"	DN: DN50 - DN300
Models	: KBVA (Cast aluminum)	KBVC (WCB - Cast steel) KBVS (Stainless steel)
Elements	: SS316/ SS316L	
Internal	: SS304/ SS316	
Design std	: API2000, EN12874, BS7244	
Flame cell	: Non	
Set pressure	: Max pressure 700mmW.C/ max vacuum -400mmW.C for weight loaded valves	
End connecion	: Flange according to ANSI150FF/150RF, JIS - 10K, DIN, ...	
Paint	: Grey epoxy on request	

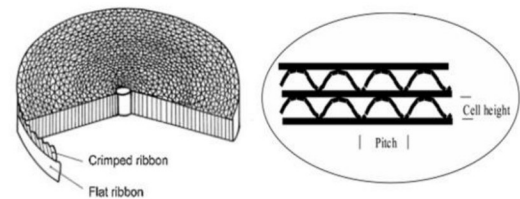
DRAWING AND PARTNAMES



Layers of elements



Elements

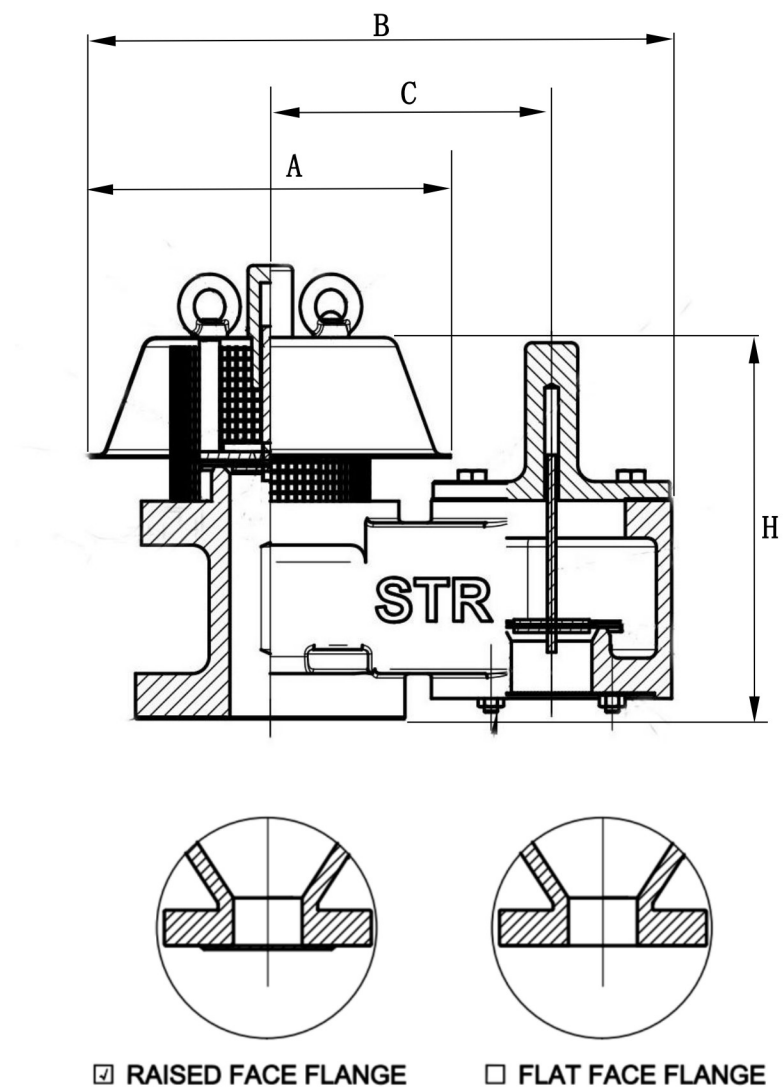


Structural elements

NUMNERS AND PARTNAMES

Part names	No.	Aluminum	WCB	SS304	SS316
Bird screen	1	SS304	SS304	SS304	SS316
Hood	2	SS304	SS304	SS304	SS316
Breather valve body	3	B26 - 319. F	A216-WCB	SS304	SS316
Gasket 1#	4	Non asbestos	Non asbestos	Non asbestos	Non asbestos
Bolt	5	SS304	SS304	SS304	SS316
Nut	6	SS304	SS304	SS304	SS316
Cover plate	7	B26 - 319. F	A216-WCB	SS304	SS316
Vacuum screen	8	SS304	SS304	SS304	SS316
Vacuum stem	9	SS304	SS304	SS304	SS316
Gasket 4#	10	Non asbestos	Non asbestos	Non asbestos	Non asbestos
Vacuum cover	11	B26 - 319. F	A216-WCB	SS304	SS316
Bolt	12	SS304	SS304	SS304	SS316
Cap nut	13	SS304	SS304	SS304	SS316
Lifting plug	14	SS304	SS304	SS304	SS316
Stem guide	15	MC Nylon	MC Nylon	MC Nylon	MC Nylon
Pressure stem	16	SS304	SS304	SS304	SS316
Guide post	17	SS304	SS304	SS304	SS316
P/V disc	18	SS304	SS304	SS304	SS316
P/V diaphragm	19	FEP/PTFE	FEP/PTFE	FEP/PTFE	FEP/PTFE
P/V Support plate	20	SS304	SS304	SS304	SS316

DIMENSIONS



Size	2"	3"	4"	6'	8"	10"	12"
DN	50	80	100	150	200	250	300
A	250	294	324	442	476	544	622
B	358	446	485	627	742	861	978
C	164	206	232	282	347	405	464
H	270	304	328	400	448	508	556

Notes: UOM: mm, Dimensions (A,B,C,H) can be the allowable tolerance